

WE GO THE DISTANCE FOR YOU



# NetAgent 9 SNMP Card

## Trusted & Reliable UPS Solution

Compatible with Marathon Power Vault Standard & High Power Series, Track Series and Sprint Series



Part Number SNMP-CY54-03

### PRODUCT INFO

- Support advance encryption: HTTPS, SSL, SSH, SNMPv3
- Centralized UPS Monitoring & Management
- Supports UPS MIB, RFC1628, PPC MIB
- Supports centralized authentication
- Supports MODBUS TCP/IP
- Real-time UPS monitoring
- Schedule periodic UPS self-test
- Record event / data log

UPS Events	YES	NO
Schedule Shutdown Event	<input checked="" type="radio"/>	<input type="radio"/>
UPS Failure	<input checked="" type="radio"/>	<input type="radio"/>
UPS entering Test mode	<input checked="" type="radio"/>	<input type="radio"/>
UPS entering Sleeping mode	<input checked="" type="radio"/>	<input type="radio"/>
UPS entering Boost mode	<input checked="" type="radio"/>	<input type="radio"/>
UPS Load Overrun	<input checked="" type="radio"/>	<input type="radio"/>
UPS Communication Lost	<input checked="" type="radio"/>	<input type="radio"/>
Turn Off UPS	<input checked="" type="radio"/>	<input type="radio"/>
AC Power Failed	<input checked="" type="radio"/>	<input type="radio"/>
UPS Battery Low	<input checked="" type="radio"/>	<input type="radio"/>
UPS Temperature Overrun	<input checked="" type="radio"/>	<input type="radio"/>
UPS Capacity Underrun	<input checked="" type="radio"/>	<input type="radio"/>
UPS entering Bypass mode	<input checked="" type="radio"/>	<input type="radio"/>

Select All Clear All Apply

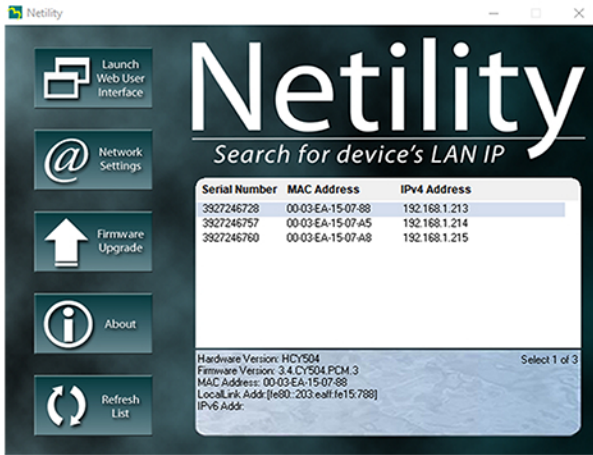
Hardware Specifications	
Watch Dog	Yes
RealTime Clock	Yes
LAN Interface	10M/100M UTP

The screenshots display the NetAgent IX web interface, including:

- System Information:** Shows hardware details like Hardware Version (M37504), Firmware Version (3.4-CY54-PCM3), and System Name (V500u-1000-011).
- Configuration - Email:** A form for setting up email notifications, including email settings and account selection.
- Configuration - Network:** A form for configuring network settings such as IP Address, Subnet Mask, Gateway, and DNS servers.
- Configuration - Web / Test:** A form for user account management, including user names, passwords, permissions, and IP filters.
- Configuration - SNMP:** A table for configuring SNMP traps, with columns for Trap ID, Agent, Community, Trap Type, Severity, and Description.
- Current Status:** A dashboard showing real-time data like Temperature (21.9 °C), Battery Status (Normal), and Battery Capacity (100%).
- UPS Events:** A log of recent events with checkboxes for acknowledgment.

## Available Software

Netility is tool software that helps the user to search all the available NetAgent within network as well as to configure IP address and firmware upgrade.



**SNMPView** is a NMS software to remotely monitor and control multiple UPS's with NetAgent. When an event occurs, SNMPView can be programmed to send an email or TRAP to inform the designated network manager. It can also inform the user of the UPS current condition or configuration, perform self-test, send a history file and more. Other third party NMS such as HP OpenView may also be use on by importing our product specific MIB file.

UPS	Host Name	Location	Output Status	Connection Status	Temperature/Fan	Loading	Output Voltage	Capacity	AC Status	Battery Status
192.168.1.211	VTW6-200-01	Bay 3	AC mode	Connection Normal	82°C (CPU)	31.0	110.0	80%	AC Normal	Battery Normal
192.168.1.212	VTW6-100-C1	White Industrial	Off-Line	Off-Line	Off-Line	Off-Line	Off-Line	Off-Line	Off-Line	Off-Line
192.168.1.214	W899-100-01	Left Rack	AC mode	Connection Normal	23.0°C (CPU)	87.0	120.0	100%	AC Normal	Battery Normal
192.168.1.215	VTW6-100-C1	Right Rack	AC mode	Connection Normal	23.0°C (CPU)	8.0	120.0	100%	AC Normal	Battery Normal

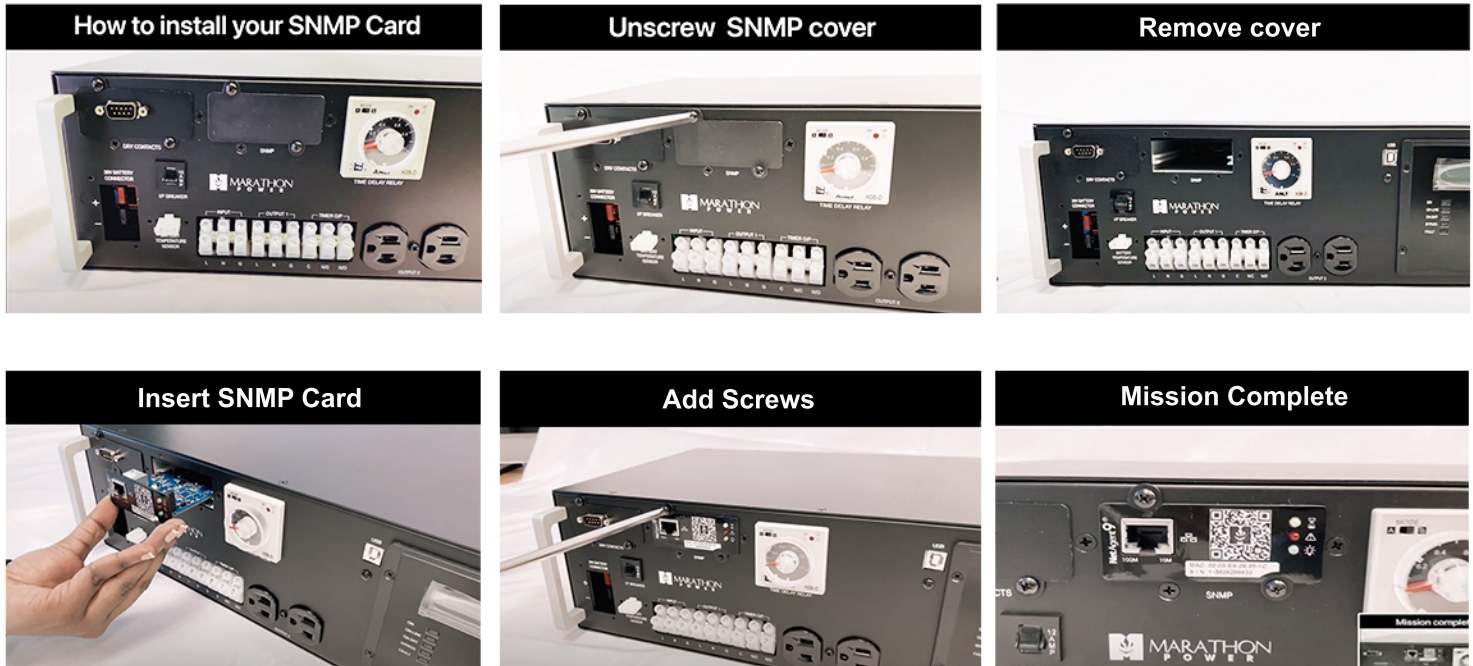
### Supported LAN Protocols

TCP/IP, HTTP, HTTPS, SSL, SSH, SMTP, SNMP, DHCP, Telnet, BOOTP, DNS, DDNS, RADIUS, IPv4, IPv6

### Supported MIB Objects

PPC MIB, RFC1628, SNMPv1, SNMPv2, SNMPv3

## SNMP Card Installation



SNMP-CY54-03



2538 E. 54th Street  
 Huntington Park, CA 90255  
 Office: 310-689-2328  
 Fax: 310-689-2329  
 sales@marathon-power.com  
 info@marathon-power.com  
 www.marathon-power.com

Your local representative / distributor is