



Vault Series True On-Line Uninterruptible Power Supplies

700VA to 12000VA



Tower Models



Rack-Tower Models



**3-YEAR
LIMITED WARRANTY**

Description

The Vault series is our latest, state-of-the art range. Featuring true on-line, double-conversion technology with power factor correction, they are ideal for the most critical and sensitive applications where the best level of power protection is required. Connected equipment is not only immune to even the slightest power fluctuations, but is also protected from other power anomalies such as spikes, surges, noise, extended under- and over-voltages, harmonics and frequency variations.

An extremely wide input voltage tolerance (up to $\pm 40\%$) and an output voltage regulation of within $\pm 2\%$ make the Vault one of the most flexible and technologically-advanced UPS's on the market. Aside from the traditional Tower form-factor, they're also available in Rack-Tower configurations.

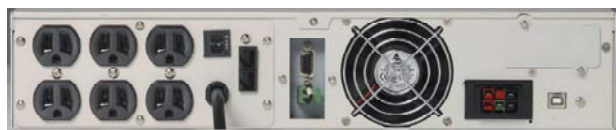
Usual features such as UPS & power-monitoring software, integral auto-bypass, 'hot-swappable' batteries, various communication options, extended run-time capability, cold-start, advanced battery management and microprocessor control, are all standard. However, a host of unique features and options bring some exclusivity to the series. They include a High Efficiency & Free-run mode, an EPO (Emergency Power Off) port and load segmentation control.

The units also feature a unique, user-friendly and interactive, multi-function LCD panel that not only displays various UPS and related parameters, but allows the user to check, test and change settings such as output voltage, input and bypass modes from the front panel while the unit is on line. Matching external battery packs allow for extended backup-time applications.

We go the *d i s t a n c e* for you.

Features & Benefits

- True on-line double conversion topology
- True sine-wave output with less than 3% THD
- Output voltage regulation to within +/- 2%
- Multi-function, interactive control panel & LCD display
- High Efficiency (HE) & Free-run mode
- EPO (Emergency Power Off) port
- Power monitoring & UPS control software
- RS-232 & USB communication interface
- Input power factor correction & bypass mode
- "Cold Start" power-up & 'Gen-Set compatibility' mode
- External battery pack connector (for matching EBP's)
- Optional SNMP & AS-400 dry-contact card slot
- "Hot-swappable" battery modules
- 50/60Hz frequency auto-sensing (or free-run)
- Overload & short-circuit protection
- LED indicators & programmable audible alarms
- AC and network (RJ-45) surge protection
- Remaining back-up time & battery charge display
- Automatic & manual self-test and diagnostic modes
- Low-profile (1U) rack-tower configuration



Vault RT Rear (2U) 700 - 1500VA

Power Monitoring & UPS Control Software

1. Advises on UPS status & monitors power disturbances
2. Indicates battery level, utilized capacity, voltage, frequency
3. Allows manual or automatic controlled shutdown
4. Allows the auto test sequence to be initiated
5. Provides real-time graphic displays of the above



Applications

- Medical & healthcare equipment
- High-end and high-density servers & workstations
- Wireless, cellular & telecommunications equipment
- Networking, VoIP & data-processing equipment
- Process control and automatic test stations
- OEM (Original Equipment Manufacturer)
- Lab, test and measurement equipment
- Commercial & industrial automation
- Security and banking systems
- Lighting controls

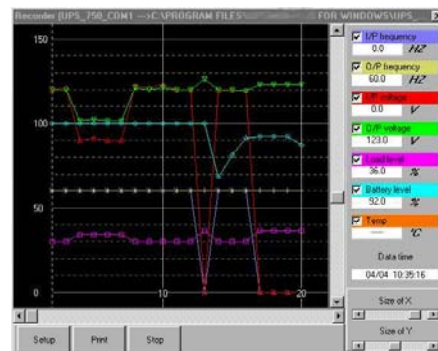
Agency Standards & Compliance

- UL 1778, cUL Listed, CE on 220V models
- FCC Compliant
- ISO 9001 Certified



Warranty

- 3-year warranty on parts & labor, 2-year on battery (Optional extension to 6 years)
- Connected equipment warranty: \$25,000 all models
Please see complete warranty for details



UPS Software - PQ Data Screen

6000VA - 12000VA Rack-Tower Models